

- Easy assembly, simple to use
- Brass fitting options also available upon request
- Vast collection of fittings to suit all tube sizes
- Adjustable bleed connectors available upon request



## General specifications

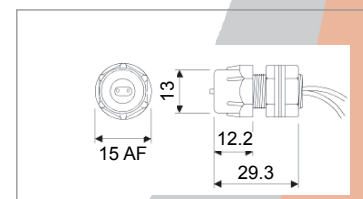
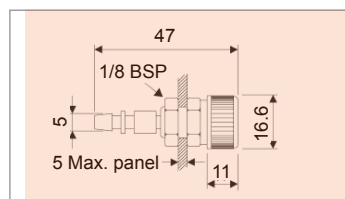
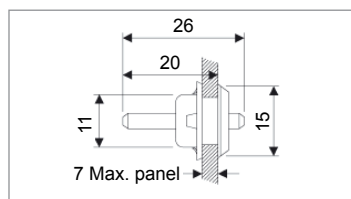
|                      |           |                             |                                 |
|----------------------|-----------|-----------------------------|---------------------------------|
| Standards/ approvals | n/a       | Contact configuration       | n/a                             |
| Degree of protection | n/a       | Operating temperature range | -10°C to +40°C                  |
| Connection method    | see table | Body material               | Brass, PVC, nylon, Polyurethane |
| Electrical rating    | n/a       |                             |                                 |

## Tubing options (reference dimensions)

| Tube type                         | Part No. | Material           | Bore Ø mm | Outside Ø mm | For use with spout Ø                         | Application  |
|-----------------------------------|----------|--------------------|-----------|--------------|--|--|
| Single tube                       | 2311-01  | Clear PVC          | 3.0       | 6.0          | 4.0  | For connecting all air, vacuum and low pressure switches and airswitches                                   |
|                                   | 2311-08  | Black PVC          | 3.0       | 6.0          | 4.0  |  |
|                                   | 2311-03  | Black polyurethane | 1.5       | 3.2          | 2.1 - 2.5 mm to fit 4.0 mm spout use 3420-28 | For microbore air systems  |
| Twin tube                         | 2311-09  | Black PU           | 3/0       | 2x 6.0       | 4.0  | For connecting all air, vacuum and low pressure switches and airswitches                                   |
| Flat twin tube                    | 2311-15  | Grey polyurethane  | 1.5       | n/a          | 2.1 - 2.5 mm to fit 4.0 mm spout use 3420-28 | For use with all foot bellows and special versions of hand controls. Tubes can be split into single cores. |
| 2.4m coiled twin tube (stretched) | 2311-14  | Grey polyurethane  | 1.5       | n/a          | 2.1 - 2.5 mm to fit 4.0 mm spout use 3420-28 |  |

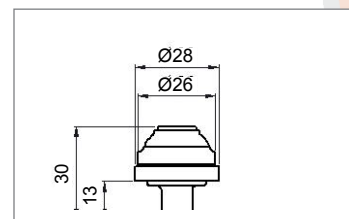
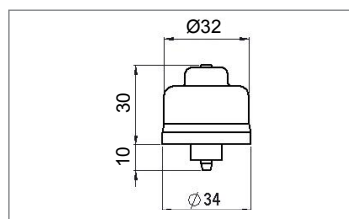
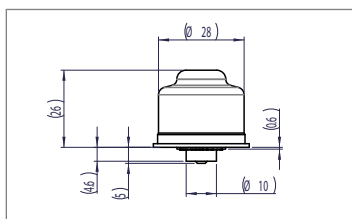
## Bulkhead connectors (reference dimensions)

### Stock model



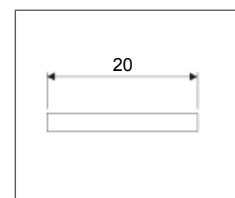
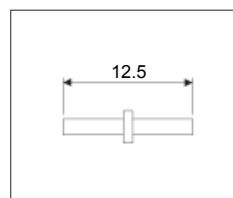
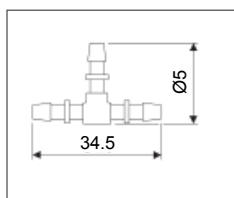
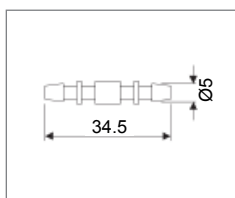
| Model No.       | 6418-00                                    | 6419-00  | 6419-0010  |
|-----------------|--|--|--|
| Panel Thickness | 1 to 7 mm                                  | 1 to 5 mm  | 0.5 to 4 mm  |
| Cut-out Ø       | 11 mm                                      | 10 mm  | 13 mm  |
| Spout Ø         | IN: 4 mm<br>OUT: 4 mm                      | 4 mm & locking collar<br>5 mm fir tree nylon plastic           | 2 x 2.1 mm brass spout for twin tube with locking collar<br>2 x 1.5 mm bore polyurethane tube 150mm long |
| Material        | Black nylon                                | Black nylon  | Black nylon & PU   |
| Fixing          | Spire fix                                  | Flange nut   | Flange   |
| Use             | Low cost bulkhead connector 3 mm I/D tubes | Bulkhead connector with connecting tube lock for 3mm I/D tubes | Bulkhead connector for 1.5mm I/D twin tube   |

## Internal bellows (reference dimensions)

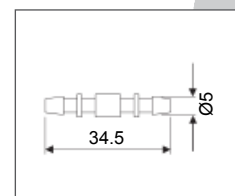
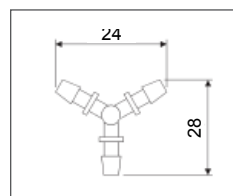
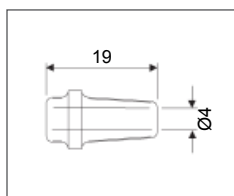
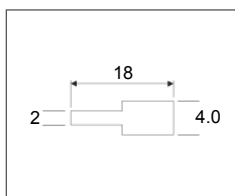


|            |         |         |         |
|------------|---------|---------|---------|
| Model No.  | 6444-03 | 6444-04 | 6435-01 |
| Material   | PVC     | PVC     | Silicon |
| Spout size | 4 mm    | 4 mm    | 2 mm    |

## Connectors (reference dimensions)



|                                     |                             |                             |         |         |
|-------------------------------------|-----------------------------|-----------------------------|---------|---------|
| Model No.                           | 6420-00                     | 6421-00                     | 3612-04 | 3420-20 |
| Material                            | Tranlucent nylon            | Tranlucent nylon            | Brass   | Brass   |
| Ø mm                                | 5 mm                        | 5 mm                        | 2.1 mm  | 2.0 mm  |
| For connecting tube with internal Ø | 3 mm<br>(2311-01 & 2311-08) | 3 mm<br>(2311-01 & 2311-08) | 1.5 mm  | 1.5 mm  |



|                                     |   |  |   |  |
|-------------------------------------|---|--|---|--|
| Model No.                           | 3420-28   | 3321-07  | 6422-00   | 6422-0001  |
| Material                            | Brass   | Soft black PVC   | Tranlucent Nylon  | Tranlucent Nylon   |
| Ø mm                                | 4 mm to 2 mm  | 4 mm to 4 mm   | 5 mm  | 5 mm   |
| For connecting tube with internal Ø | 3mm to 1.5 mm   |  | 3 mm<br>(2311-01 & 2311-08)   | 3 mm<br>(2311-01 & 2311-08)                                      |
| Use                                 | For reducing or increasing small to large bore tubing | in line reducer to connect from 4mm O/D PVC tube to 4 mm spout | Combining variations of inlet and outlet e.g. 1 bellows 2 airswitches | Pours bleed filter flow 0.1/0.4 Lt/Min @ 8.5 PSI air flow damper |